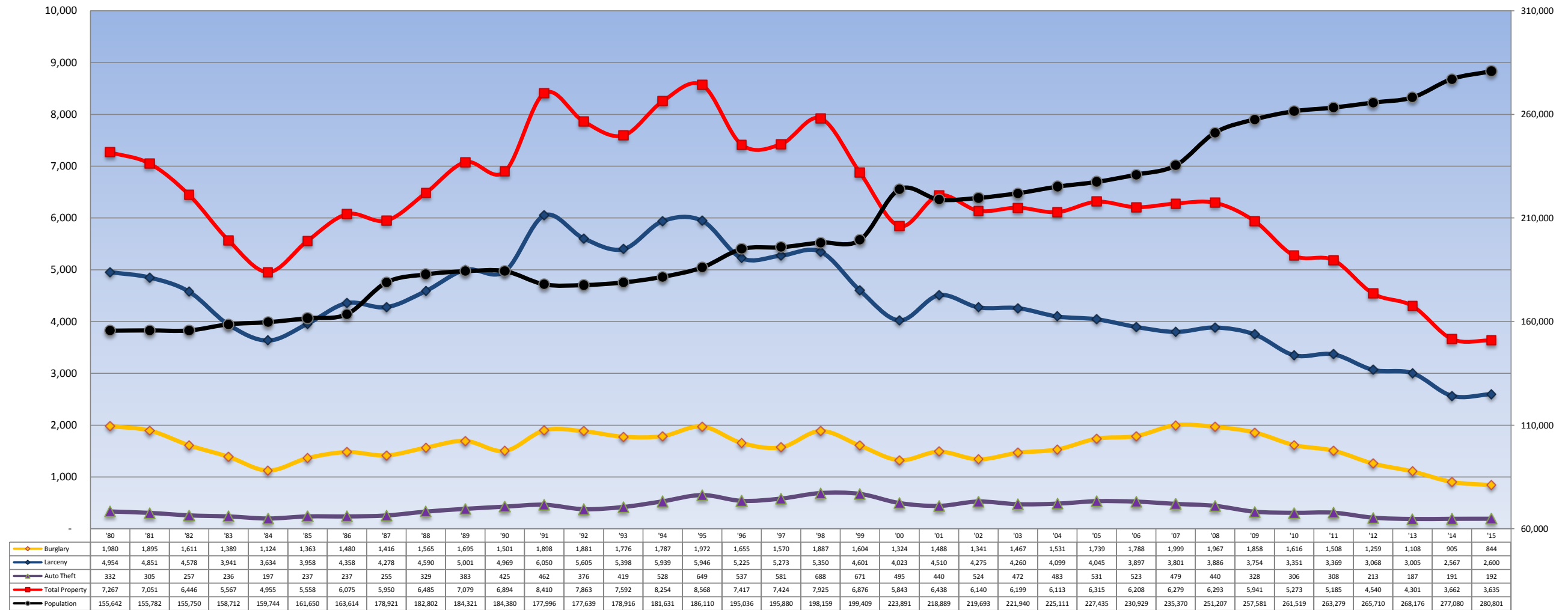




### Greensboro Indexed Property Crime Per 100,000: 1980-2015



### Greensboro Property Crime Actual Offenses Reported

Year	'80	'81	'82	'83	'84	'85	'86	'87	'88	'89	'90	'91	'92	'93	'94	'95	'96	'97	'98	'99	'00	'01	'02	'03	'04	'05	'06	'07	'08	'09	'10	'11	'12	'13	'14	'15
Burglary	3082	2952	2509	2205	1796	2,204	2,421	2,534	2,861	3,125	2,767	3,379	3,342	3,177	3,245	3,671	3,228	3,076	3,739	3,198	2,964	3,258	2,946	3,255	3,446	3,954	4,129	4,705	4,940	4,787	4,225	3,969	3,345	2,971	2,506	2,369
Larceny	7711	7557	7130	6255	5805	6,398	7,131	7,655	8,391	9,217	9,161	10,768	9,957	9,657	10,787	11,067	10,190	10,329	10,602	9,174	9,008	9,871	9,392	9,455	9,227	9,200	9,000	8,947	9,762	9,669	8,763	8,870	8,153	8,060	7,113	7,300
Auto Theft	517	475	400	375	314	383	387	456	602	706	784	823	668	749	959	1,208	1,048	1,138	1,363	1,339	1,109	964	1,151	1,048	1,088	1,208	1,207	1,127	1,106	846	801	812	566	502	528	539
Total Property	11310	10984	10039	8835	7915	8,985	9,939	10,645	11,854	13,048	12,712	14,970	13,967	13,583	14,991	15,946	14,466	14,543	15,704	13,711	13,081	14,093	13,489	13,758	13,761	14,362	14,336	14,779	15,808	15,302	13,789	13,651	12,064	11,533	10,147	10,208

Source: Crime data for 2015 is preliminary. Crime data from 1976-2014 are collected from the State Bureau of Investigation and the official data for GPD. Property crimes reflect the number of victims per 100,00 persons for the City of Greensboro for the given year. Population figures are from the City of Greensboro Planning Department, with the exception of years 1985-2013 which are estimates from the SBI.