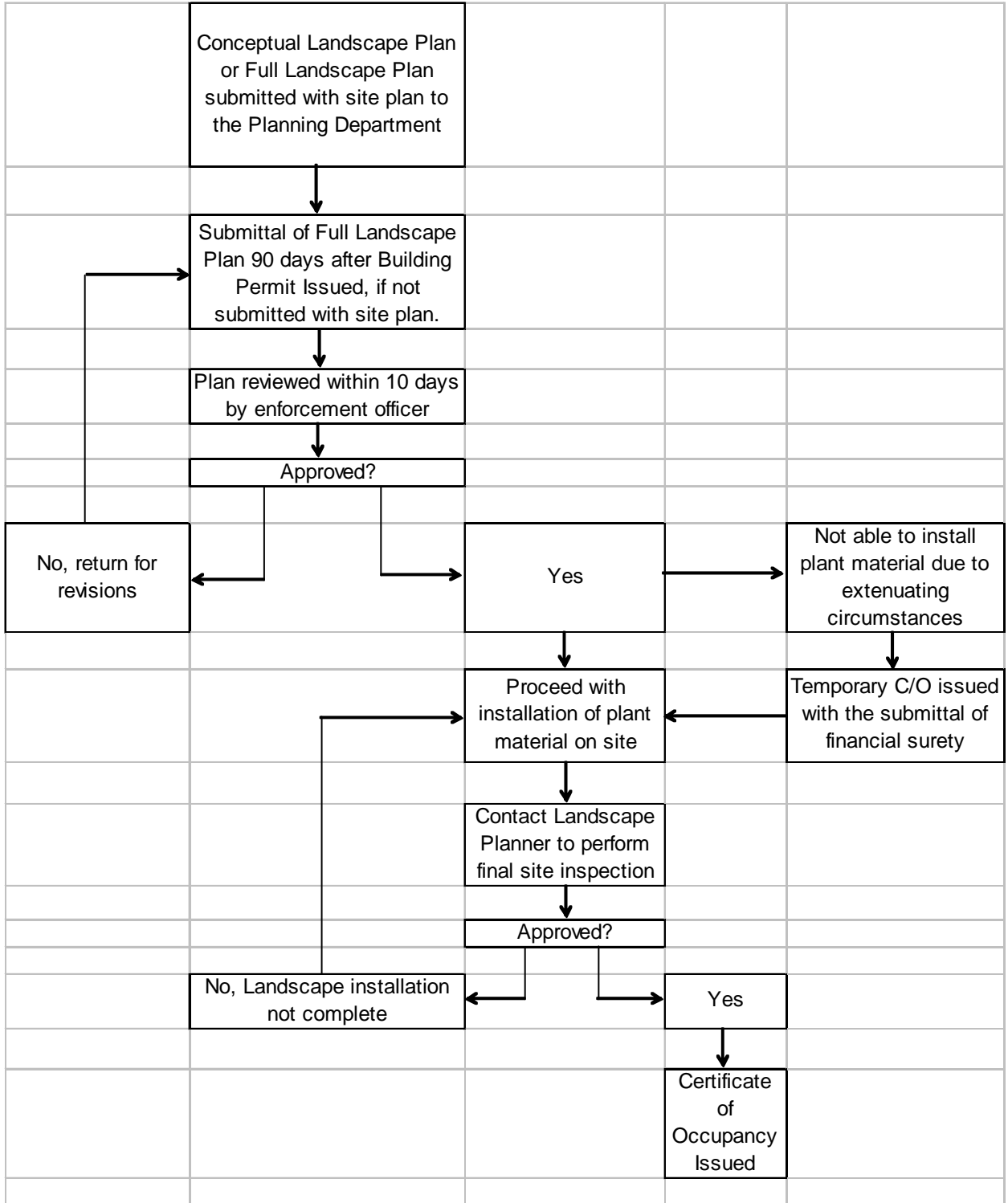
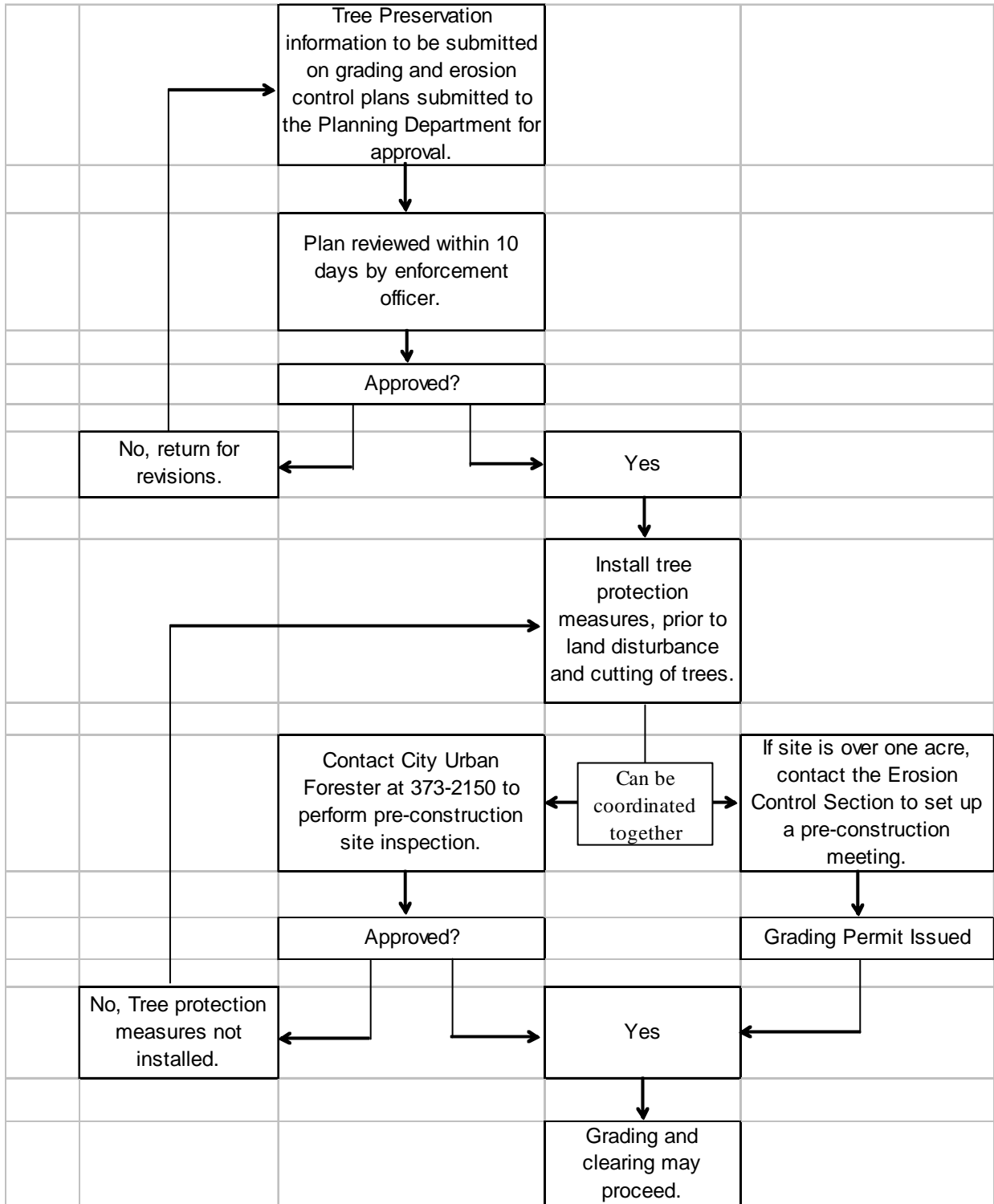


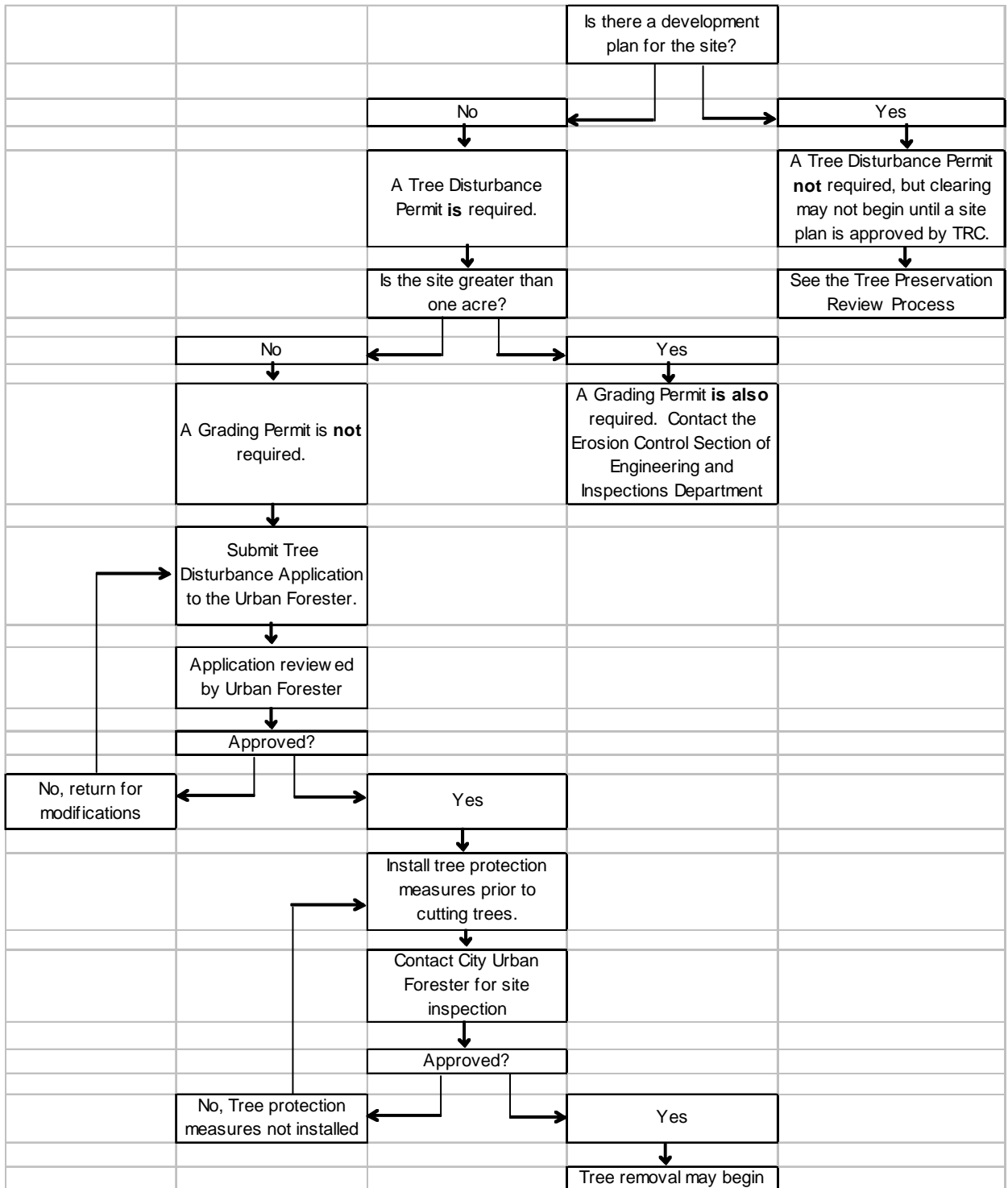
LANDSCAPE PLAN REVIEW PROCESS



TREE PRESERVATION REVIEW PROCESS



TREE DISTURBANCE PERMIT PROCESS



10. Note on Plan:

The applicant will contact the Landscape Planner at 373-2918 after the completion of the site grading to arrange for an on-site meeting/inspection to determine the credit for the existing vegetation towards the number of plants in the perimeter buffer yards.

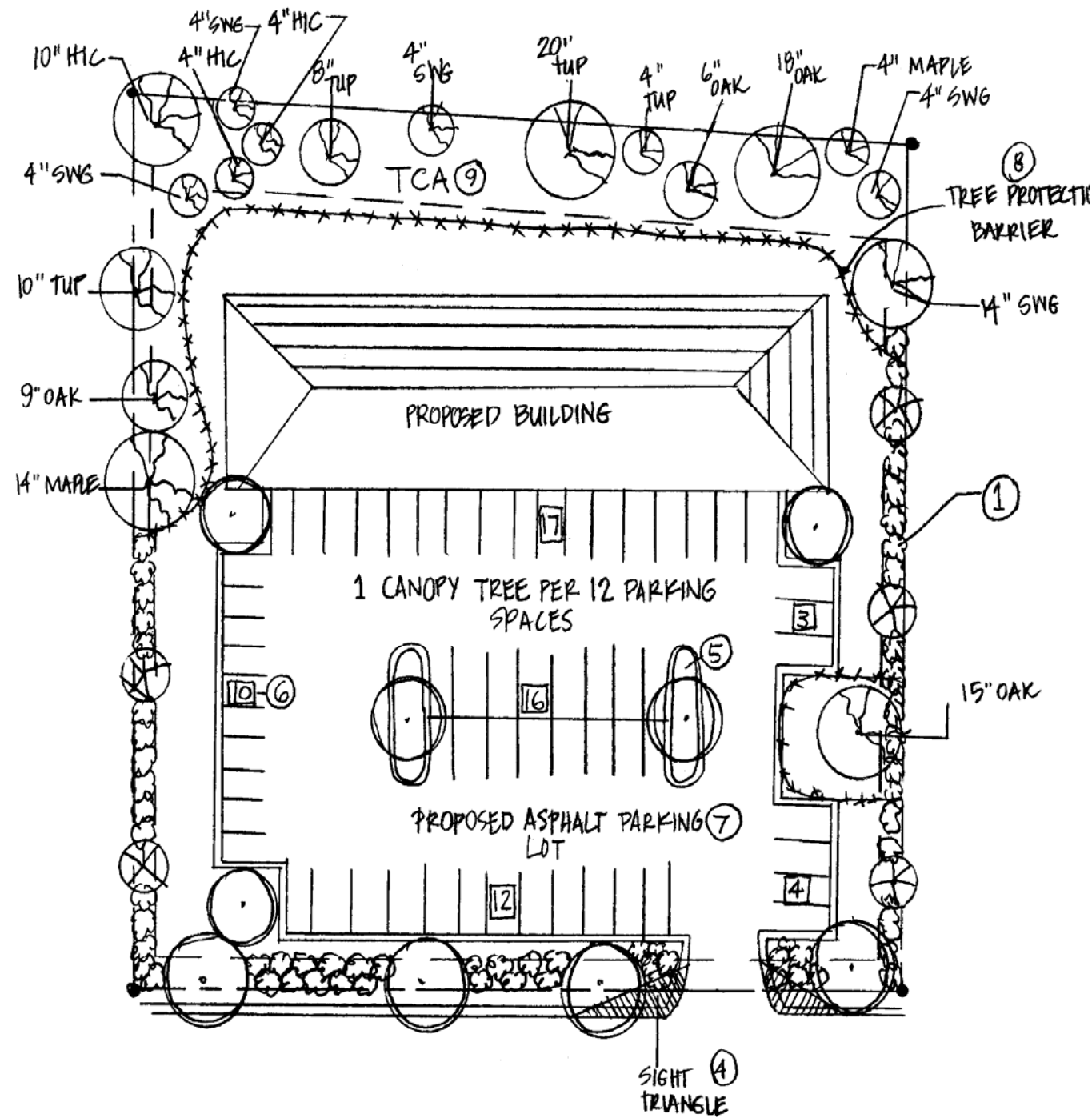
10. Note on Plan:

Water wise Planting Techniques: The following soil preparation techniques shall be used for all required landscape areas.

- 1) Soil preparation for the entire landscape yard includes the addition of organic amendments tilled to a depth of eight (8) to twelve (12) inches.
- 2) All Plantings in the landscape yards shall be mulched including interior parking lot islands under five hundred (500) square feet to a depth of three (3) to four (4) inches and maintained weed free thereafter.
- 3) Earthen basins are constructed around the installed plants.
- 4) Plants, as permitted by this Ordinance, are grouped together where possible.
- 5) For establishment and survival, plants shall be watered in the first year of planting.
- 6) Irrigation: It is suggested that drip irrigation, which includes drip masters, be used for required landscaping planting beds during the required establishment period. After establishment, supplemental watering can be reduced and used on an as needed basis. Traditional spray irrigation is prohibited except for turf areas.

2. PLANT LIST

| Quantity | Symbol | Description | Size | Height |
|----------|--------|----------------|----------|--------|
| 18 | | Existing trees | NA | NA |
| 9 | | Shumard Oak | 2" | 8' |
| 5 | | Crape myrtle | 2" | 4' |
| 80 | | Nellie stevens | 3 gallon | 18" |



LANDSCAPE PLAN PREPARATION GUIDELINES

1. Depict plant locations.
2. Provide plant list.
3. Indicate the minimum required size for canopy trees, understory trees and shrubs at the time of installation.
4. Depict the required sight distance triangles on both sides of the driveway and on both directions at the public street intersection.
5. Provide landscape islands in the parking area for the installation of canopy trees.
6. Indicate the number of parking spaces in each run.
7. Indicate the type of material to be used to pave the required parking spaces and drive isles.
8. Locate and describe barriers to protect any vegetation from damage both during and after construction, if any.
9. Identify tree conservation areas, if any.
10. Provide the notes on plan

NOTE: The requirements shown above are general requirements. On unique or complicated sites, additional information may be required.

10. Note on Plan:

This is a conceptual landscape plan.

The applicant must submit a detailed landscape plan (which depicts the plant types and locations) within 90 days from the issuance of the building permit for review by the Planning Department. The landscape plan must be approved by the Planning Department prior to receiving an inspection for the Certificate of Occupancy.

10. Note on Plan:

The applicant will contact the Landscape Planner at 373-2918 after the completion of the site grading to arrange for an on-site meeting/inspection to determine the credit for the existing vegetation towards the number of plants in the perimeter buffer yards.

10. Note on Plan:

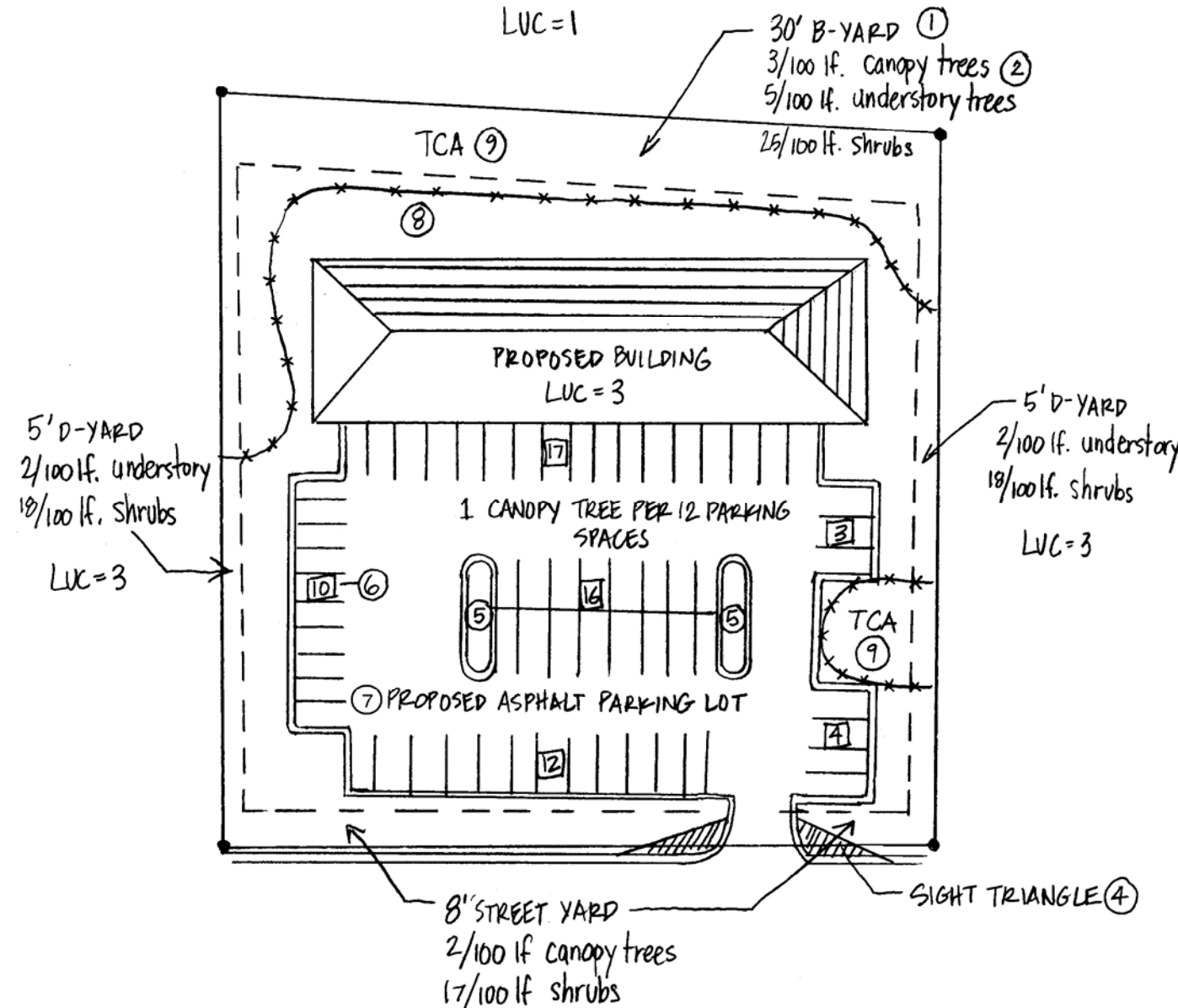
Canopy Tree Size: Water wise canopy trees, using required planting techniques must be a minimum of two (2) inches in caliper, measured six (6) inches above grade, when planted (See Section 30-5-4.4 (N)). When mature, a canopy tree should be forty (40) feet high and have a minimum crown width of thirty (30) feet. Other canopy trees must be a minimum of three (3) inch caliper, measured (6) inches above grade, when planted.

Understory Tree Size: Water wise understory trees must be a minimum of one (1) inch in caliper, measured six (6) inches above grade, when planted. (See section 30-5-4.4 (N)). When mature, an understory tree should be twenty-five (25) to forty (40) feet high. Other understory trees, must be a minimum of two (2) inches in caliper measured six (6) inches above grade at the time of installation.

Shrub Size and Type: All approved water wise shrubs, using required planting techniques planted parallel to the edge of parking lots, access drives, loading and unloading areas and outside storage shall be evergreen and installed at a minimum size of eighteen (18) inches, spread or height, and reach a minimum height of thirty-six (36) inches and a minimum spread of thirty (30) inches. (See section 30-5-4.4 (N)). Required water wise shrubs in other locations, outside of the areas listed above may be evergreen or deciduous, shall be three (3) gallon in size as per ANSI standards at the time of installation.

3. Minimum Plant Sizes

| | |
|-------------------|------------------------------------|
| Canopy trees: | 2" Caliper |
| Understory Trees: | 1" Caliper |
| Shrubs: | 18" height at time of installation |



10. Note on Plan:

Water wise Planting Techniques: The following soil preparation techniques shall be used for all *required landscape areas*.

- 1) Soil preparation for the entire landscape yard includes the addition of organic amendments tilled to a depth of eight (8) to twelve (12) inches.
- 2) All Plantings in the landscape yards shall be mulched including interior parking lot islands under five hundred (500) square feet to a depth of three (3) to four (4) inches and maintained weed free thereafter.
- 3) Earthen basins are constructed around the installed plants.
- 4) Plants, as permitted by this Ordinance, are grouped together where possible.
- 5) For establishment and survival, plants shall be watered in the first year of planting.
- 6) Irrigation: It is suggested that drip irrigation, which includes drip masters, be used for required landscaping planting beds during the required establishment period. After establishment, supplemental watering can be reduced and used on an as needed basis. Traditional spray irrigation is prohibited except for turf areas.

CONCEPTUAL LANDSCAPE PLAN PREPARATION GUIDELINES

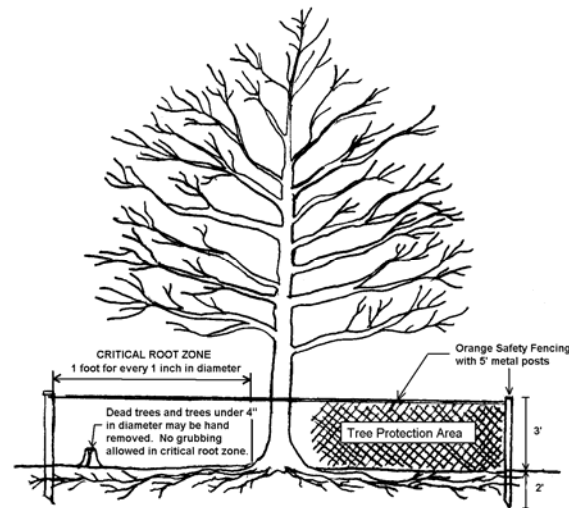
11. Depict the boundary and width dimensions of all required planting yards.
12. Indicate the minimum planting rate for all required planting yards.
13. Indicate the minimum required size for canopy trees, understory trees and shrubs at the time of installation.
14. Depict the required sight distance triangles on both sides of the driveway and the sight distance triangles on both directions at the public street intersection.
15. Provide landscape islands in the parking area for the installation of canopy trees.
16. Indicate the number of parking spaces in each run.
17. Indicate the type of material to be used to pave the required parking spaces and drive isles.
18. Locate and describe barriers to protect any vegetation from damage both during and after construction, if any.
19. Identify tree conservation areas, if any.
20. Provide the notes on plan.

NOTE: The requirements shown above are general requirements. On unique or complicated sites, additional information may be required.

8. Tree Preservation Notes:

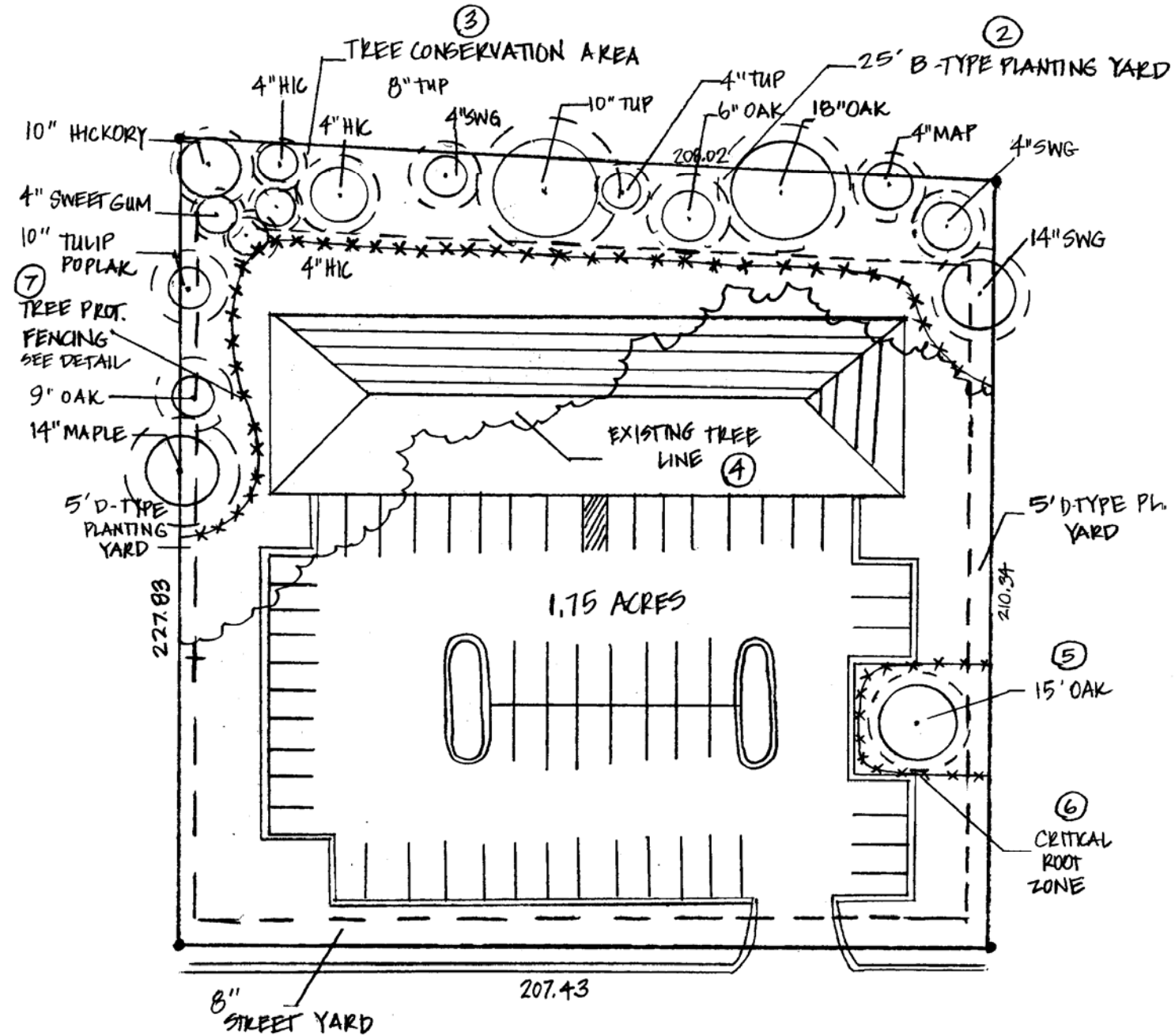
1. Tree protection fencing shall be installed prior to land disturbance. A civil penalty of \$500 per day may apply.
2. Contact the Urban Forester to set up a pre-construction meeting jointly with the Erosion Control Division of the Engineering and Inspections Department prior to land disturbance for inspection of tree protection fencing.
3. No parking, storage, dirt stockpiling, concrete washout or any other activities is permitted in the tree conservation areas.
4. Removal or damage to trees in the Tree conservation area will be subject to the penalties established in 30-5-4.8 of the Landscaping and Tree Preservation Ordinance.

7.



9.

| | |
|--------------|------------------|
| Required TCA | 7,457.45 sq. ft. |
| Actual TCA | 7,771.60 sq. ft. |



TREE PRESERVATION PLAN PREPARATION GUIDELINES

21. All tree preservation comments shall be made on the grading and erosion control plan sheet.
22. Identify and label the planting yards.
23. Identify and label the tree conservation area.
24. Show the existing tree line, if any.
25. Identify all trees to be preserved, including tree size and type. (See page 34 for tree survey options)
26. Identify the critical root zones of trees to be preserved.
27. Locate and detail the type of barrier to be used to protect the tree conservation area from damage. (Silt fencing can be used as tree protection where tree protection fencing and silt fencing overlap. Please make note on plan.)
28. Provide notes on plan.
29. Show, in a chart, the amount of **required** tree conservation area in square feet and the amount of **actual** tree conservation area in square feet.

NOTE: The requirements shown above are general requirements. On unique or complicated sites, additional information may be required.