

Public Hearing
Zoning Commission
November 13, 2006

RS-9

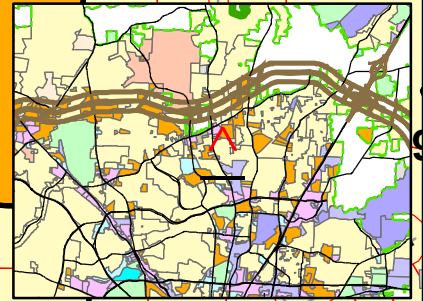
RM-12

CD-HB

#2591

CD-RM-12

#2298



REQUESTED FROM RS-9
TO RS-7 7.024 ACRES (C)

RS-7

RS-9

RM-18

GREENBRIAR RD

RS-9

CD-RM-18

#2891

RM-18

RS-9

RM-18

CD-RM-26

#3406

LB

CD-LB

#3472

DENNY RD

RS-9

RS-9

RS-9

LI

RS-9

RS-9

LI

RS-9

3

1" = 400'
SHEETS
127, 128

