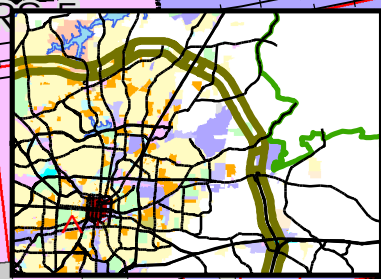


Public Hearing  
Zoning Commission  
October 13, 2008



OAKLAND AV

STATE ST

GB

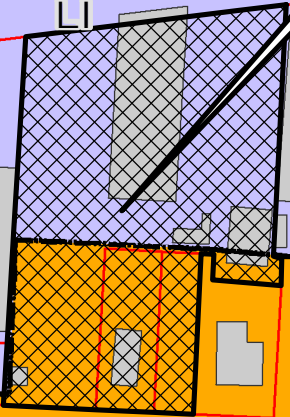
GB

REQUESTED FROM LI and RM-12  
to CD-PDI (1.60 ACRES)

W LEE ST

HIGHLAND AV

Z-08-10-002



UNION ST

SILVER AV

RM-12

GREGORY ST

3  
1" = 60'  
Sheet  
7

