



e-Newsletter

Volume 3 - Issue 3

March 2008

Published by the Visibility/Publicity—Commission on the Status of Women
PO Box 3136, Greensboro, NC 27402-3136
Editor: Commissioner Linda Waddell, Chair, Visibility/Publicity Committee

Message from the Chair

Greetings and welcome to the third edition of our *e-Newsletter*. We sincerely hope you will find this publication informative and a resource for items of interest to women.

The Commission on the Status of Women (CSW) is excited about its plans for 2008. As part of our focus on community outreach, CSW commissioners have been meeting with the staff of several women’s organizations and establishing partnerships. To date, we have met with the Women’s Resource Center, YWCA, and League of Women’s Voters. This active liaison with other women’s groups concerned with removing barriers to women provided the opportunity to have Ashley Brooks Reckard, Executive Director of the Women’s Resource Center, as guest speaker at CSW’s February 19, 2008 meeting. Donna Newton of the Greensboro Neighborhood Congress will be guest speaker at the March 18, 2008 meeting, and we look forward to inviting other interesting speakers on subjects pertaining to women’s issues and projects. CSW is also participating in the Bicentennial Parade.

Under our mandate to strive for economic advancement of women, CSW is partnering with the *Nussbaum Center for Entrepreneurship* to present a workshop on entrepreneurship for women. In addition, CSW’s primary focus for 2008 will be *gender pay equity*. Upon completion of the study on wage inequalities, we plan to present our findings and recommendation to City Council.

CSW was pleased to welcome Dr. Anthony Wade, the new Human Relations Director. We certainly appreciate his valuable insight and support.

As CSW moves forward on addressing women’s issues for 2008, we encourage our readers to bring to our attention any items or concerns that may impact the economic and social well-being of women in Greensboro.

HAPPY READING!!

Jeanne E. Hudgens, Chair

www.greensboro-nc.gov/Departments/Relations/women

Inside this issue:

Women’s History Month

2008 Working Woman Survey

Legislative Update

For Your Health

CSW Committee Activities

CSW On the Move

Current Events



- Commission on the Status of Women (CSW) meets on the third Tuesday of each month in City Council Chambers 1:00 p.m.—2:00 p.m. The meetings are open to the public.
- Please contact the CSW office for any questions:

Phone: (336) 373-2390
Fax: (336) 373-2505

Yamile Walker, Human Relations Administrator
Liaison to CSW
E-mail: yamile.walker@greensboro-nc.gov

Visit CSW website for other links and resources.

MARCH IS NATIONAL WOMEN'S HISTORY MONTH 2008

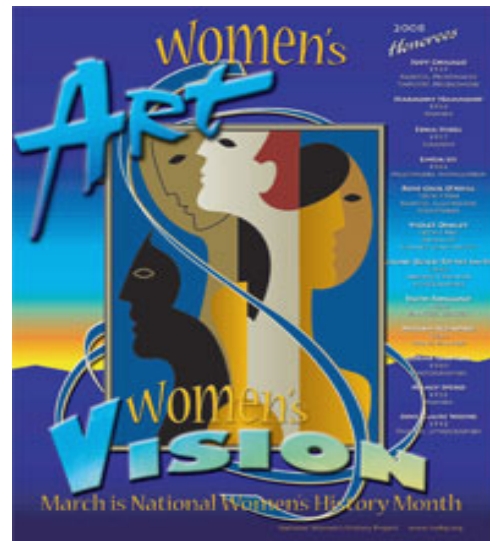
Women's Art Women's Vision

Women's History Month Facts

© DiversityInc 2007 ® All rights reserved.

Origin of Women's History Month

Kiera Zetkin, a German woman, was the first to organize an International Women's Day on March 19, 1911. Zetkin was inspired by working class American women, and wished to have a day that would commemorate the strength of women everywhere as well as women's rights. Although at first well received, the celebration of International Women's Day began to dwindle as the decades went on, and was not rekindled until the Women's Movement of the 1960's. It was during this time that women began to look back on their contributions throughout history, and began to strongly feel that they too deserved acknowledgement. Therefore, in 1978 on the week of March 8, female historians took on the task of integrating the accomplishments of women into history by promoting the celebration of Women's History Week. The week quickly grew popularity, and in 1987, Congress proclaimed March as National Women's History Month. Learn more about National Women's History Month at www.nwhp.org.



FACTS

- As of October 1, 2007, there were **153.6 million** females in the United States, and **149.4 million** males. (US Census)
 - In 2006, women age 16 years and older who worked year-round, full time earned **.77 cents** for every dollar males earned and had a median of **\$32,649** of annual income. (US Census).
 - Washington, D.C. is the only state or state equivalent where women had the closest earnings (**\$49, 544**) to that of men -- **.98 cents** to every **\$1 dollar** that a male earned. (US Census).
 - In the 2007- 2008 school year, women will earn **59 percent** of bachelor degrees and **61 percent** of master's degrees. (US Census).
 - 65 percent of women age 18 and older voted in the 2004 presidential election, compared with 62 percent of males. (US Census).
- There are **84,000** female police officers. In addition, there are about **9,000** women firefighters, **315,000** lawyers, **278,000** physicians and surgeons, and **37,000** pilots. (US Census).

FIRSTS IN GOVERNMENT

- Victoria Claflin Woodhull is the first woman presidential candidate in the United States when she is nominated by the National Radical Reformers in 1872. In 1964, Margaret Chase Smith is the first woman nominated for president of the United States by a major political party, at the Republican National Convention in San Francisco
- Susanna Medora Salter is the first woman elected mayor of an American town, in Argonia, Kansas.
- Shirley Chisholm is the first African-American woman in Congress. She served in the U.S. House of Representatives for 14 years.
- In 1990, Dr. Antonia Novello is sworn in as U.S. Surgeon General, becoming the first woman (and first Hispanic) to hold that position.
- Frances Perkins, appointed Secretary of Labor by President Franklin D. Roosevelt, is the first female member of a presidential cabinet
- Sandra Day O'Connor, appointed by President Reagan, is the first female Supreme Court Justice.



2008 Ask a Working Woman Survey sponsored by **Working America and the AFL-CIO.**

Help write the survey by telling them [what questions you want to ask working women.](#)

[With your input](#), they hope to create a survey that presents to the current crop of presidential candidates the most important issues for working women.

Whether it's equal pay, affordable health insurance, flexible schedules to spend time with family, a way to save for retirement or fair compensation for overtime, we'll make sure our future leaders know exactly which issues are of greatest concern to working women.

[So please, help create a survey that can bring about progress for working women this year.](#)

You have a powerful voice. Now is the time to make it heard!

For further information go to: www.afl.cio.org

LEGISLATIVE UPDATE

NATIONAL ASSOCIATION OF COMMISSIONS FOR WOMEN (NACW)

supports Title IX.

Title IX's impact on women's athletic participation is one of the country's greatest success stories. In the past three decades, Title IX's fight against sex discrimination in federally-funded schools and educational programs in the U.S. has led to a 400 percent increase in the rate of female participation in college sports and a more than 800 percent increase in participation at the high school level.

Despite the significant gains girls and women have made since the enactment of Title IX, a significant drawback to the law's enforcement at the high school level involves the lack of data reporting. The U.S. Department of Education has not required these schools to report athletic opportunity, participation, and funding statistics to any higher authority. Colleges are required to report this data, it's time our high schools are too.

High School Sports Information Collection Act (S. 518) would require high schools to report basic information on the number of female and male students in their athletic programs and the expenditures made for their sports teams. This bill only has five cosponsors. The Senate is currently working on adding provisions of this bill in the No Child Left Behind Act. An increase in the number of cosponsors will demonstrate support for including the provisions in NCLB.

While members of Congress have not yet returned to Washington, their staff has, and they are busily preparing for their bosses' return. Now is a great time to contact your senators and their offices, even if you have already done so in the past, to educate them about this bill.

FOR YOUR HEALTH

COMMUNITY GRANTS

The Carolina Community Network to Reduce Cancer Health Disparities (CCN) is pleased to announce a second call for community grant proposals that focus on reducing cancer health disparities through the development of collaborative research projects or educational activities. The CCN intends to competitively award \$40,000 in community grants, with budgets ranging from \$500 to \$10,000.

Proposed projects must focus on breast, prostate or colorectal cancer in the adult African American population. Eligible applicants include community-based, faith-based, health care organizations and other community groups that serve one or more of the following counties:

Alamance, Caswell, Chatham, Edgecombe, Guilford, Halifax, Montgomery, Nash, Northampton, Orange, Randolph, Rockingham and Wilson.

For further information, please contact Michelle Manning at:

mmaing@schr.unc.edu or Crystal Meyer at cmeyer@email.unc.edu

Applications are available at: www.carolinacommunitynetwork.org

Deadline for applications: March 17, 2008 by 5 p.m.

U.S. Department of Health and Human Services Office on Women's Health Region IV

The U.S. DHHS Office on Women's Health (OWH) Region IV supports activities to promote a greater focus on women's health issues at the regional, state, and local levels. The Region IV OWH program collaborates with state and local governments, community-based organizations and others. Through such relationships, it identifies and coordinates activities on high-priority health needs and initiatives that address regional women's health. The goals for the Office also address two over-arching goals of *Healthy People 2010* to increase quality and years of healthy life and the elimination of health disparities. Funds available from Region IV OWH will be obligated for those activities to support the following objectives for the U.S. DHHS OWH:

- *To advance superior health practices for women by identifying and replicating successful HHS women's health programs in communities.*
- *To promote public education by increasing the participation of women/girls in health education programs and increasing the number of information sessions to the public.*
- *To collaborate with partners on women's health issues to increase access to new partnerships.*
- *To foster availability of and use of health information by increasing the number of new users to Quick Health Data Online (www.womenshealth.gov/quickhealthdata/).*
- *To promote health professional education by educating health professionals on women's health issues supporting the shift from reaction to prevention in healthcare.*

For further information, contact: Susanne.Pickering@hhs.gov.

GREENSBORO COMMISSION ON THE STATUS OF WOMEN

Over 30 years: Enhancing the Lives of Women

Mission Statement

To improve the status of life for women in Greensboro.

2007-2008 Commission on the Status of Women

Jeanne E. Hudgens, Chairperson (District 3)
Jane C. Cauthen, Vice Chairperson (District 4)
Dorthula 'Dottie' Alston (District 1)
Yvonne Cobb (District 5)
Mari Pino del Rosario (District 4)
Shirley Foster (District 1)
Gloria Harris (District 3)
Spoma Jovanovic (District 1)
Julie Lapham (District 3)
Cynthia M. Pinnix (District 2)
Cassandra D. Robinson (District 4)
Linda Waddell (District 2)
Brenda Walker-Williams (District 5)

Welcome New Commissioners

Yvonne Cobb
Gloria Harris
Cassandra D. Robinson
Brenda Walker-Williams

2007-2008 COMMITTEES

Executive Committee

Jeanne E. Hudgens, Chair

Membership

Jane C. Cauthen, Chair

Visibility/Publicity

Linda Waddell, Chair

Community Partnership

Cynthia Pinnix, Chair

Gender Pay Equity

Spoma Jovanovic, Chair

Gender Violence

Mari Pino del Rosario, Chair

Services for Seniors

Dottie Alston, Chair

COMMITTEE ACTIVITIES

Community Partnership Committee

The mission of the Community Partnership Committee (CPC) is to create a more efficient networking system to inform women in the City of Greensboro of the many services that are offered to meet their needs. Under the leadership of **Commissioner Cynthia Pinnix**, Chairperson, CPC commenced scheduling meetings with staff members of various women's organizations to discuss collaborative efforts to address issues impacting women in Greensboro

Dr. Anthony Wade, Director of Human Relations and Executive Director of CSW, Jean Hudgens, CSW Chairperson, and Commissioner Pinnix met with **Adrienne Witherspoon, Executive Director of the Greensboro YWCA** on January 25.

Diane Davis, President of the League of Women Voters met with Dr. Wade, Chair Jeanne Hudgens, Commissioner Linda Waddell, Chair of CSW's Visibility/Publicity Committee, and Dr. Roy D. Moore, President of the Guilford County African-American Caucus on February 5.

In addition to meeting with **Ashley Reckard, Executive Director of the Women's Resource Center (WRC)** on February 12, CPC Chair Pinnix and her committee went on a tour of WRC. Ms. Reckard also gave a presentation on WRC at the February 19 meeting of CSW commissioners.

CPC's goal is to establish partnerships with women's organizations and agencies on projects that will direct attention to the urgent needs of women in our community.

Gender Pay Equity Committee

CSW has established a new committee to re-research the gender pay issue. Gender pay equity rarely garners much media attention, but the issue is significant for women who comprise 55% of the labor force. Across all income levels and occupations, women earn less money than men for the same work. According to the American Association of University Women (AAUW), college-educated women working full time can expect to earn \$46,000 a year compared to \$62,000 a year

(continued on page 6)

GREENSBORO COMMISSION ON THE STATUS OF WOMEN

Over 30 years: Enhancing the Lives of Women

Committee Activities (cont.)

(continued from page 5)

earned by men. The National Committee of Pay Equity reported in 2004 that women earn only 77 cents for every dollar that men earn for the same work. Wage discrimination has been identified as a priority by women and women's advocacy groups across the nation. CSW's Gender Pay Equity Committee, under the leadership of **Commissioner Spoma Jovanovic**, Chairperson, will join national efforts underway to take action on this important issue.

For further information on pay equity, go to:
www.pay-equity.org/cando_audit.html;
www.womenwork.or/policyadvocacy/htm;
www.aauw.org

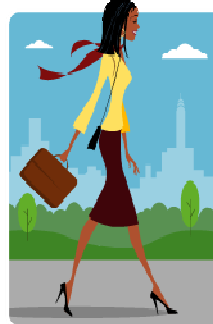
Services for Seniors Committee

Commissioner Dottie Alston, Services to Seniors Committee Chairperson, has been investigating the availability of funds to provide Greensboro's senior community with prescription assistance. Grants are available through the Medication Assistance Program (MAP), administered organizations such as local centers on aging, senior centers, health departments, hospitals, community health centers, and clinics. Funds awarded to MAP are provided by the Health Wellness Trust Fund Commission (HWFTFC) established by the NC General Assembly to address the need to assist seniors and low-income individuals under 65 "in acquiring free, low-cost or discounted medications through public and private assistance programs." HWFTFC awarded 23 grants totaling \$8.7 million over three years to create local MAP programs across the state. Over 68.8 million dollars worth of free medicine has been dispensed to nearly 40,000 patients from January 2003 to December 2005. Guilford County Dept. of Public Health has received a total of \$793,957.

For more information on MAP eligibility, contact:
Guilford County Department of Public Health at 641-7777 or www.guilfordhealth.org.



CSW ON THE MOVE



Commissioner Shirley Foster attended "A Woman's Journey Toward Financial Independence" investment seminar presented by Carlene Damba, owner of Damba Financial Services. Ms. Damba spoke on the financial strains experience by women upon the death or divorce from a spouse. She is a

certified divorce financial advisor and has dedicated her career to helping women gain financial freedom. One of Ms. Damba's target groups is young women, 18—25, to provide them with sound financial knowledge before they enter into the work force and/or marriage.

Financial tip: If you are investing in a variable annuity through a tax-advantaged retirement plan such as an IRA, you will receive no additional tax advantage from the variable annuity. Consider buying a variable annuity if the annuity has other features, such as lifetime income payments and death benefits protection.

For further information on financial services or seminars, contact Carlene Damba at: 336-854-8500.

Commissioner Shirley Foster attended a meeting at the Community Foundation on behalf of CSW. Their focus was to invite organizations who serve women and children to determine from a grassroots level the primary needs of women. Suggestions included:

- A central location where women and children can meet their physical and emotional needs arising from pregnancy to various forms of abuse.
- Legislative advocacy for changes in laws impacting women and children
- Funding for daycare.
- Seminars to inform women of their legal rights.

CURRENT EVENTS

The League of Women Voters of the Piedmont Triad and
The Moses Cone ~ Wesley Long Community Health Foundation

Proudly Present the Community Education Series:

Civics 104:

Your Health • Your Money • Your Vote

Health Care Spending: Follow the Money	March 11, 2008
Addiction, Mental Health and Mental Health Reform	March 25, 2008
Your Health Care: Who's the Decider?	April 22, 2008
Determinants of Health: Is It ME or Is It WE?	May 13, 2008

Each session will provide participants with tools for informed advocacy.

Sessions will be held at
Wesley Long Community Health Education Center
501 North Elam Avenue, Greensboro, between Friendly Avenue and Benjamin Parkway.
(From Wendover Avenue take South Benjamin exit near Friendly Shipping Center)

All sessions are 7:30 pm – 9:30 pm

This program is FREE to the public. Plan now to attend!

3 WAYS TO REGISTER FOR CIVICS 104

www.lwvpt.org

request form to fill out & mail to

LWVPT

1 YWCA Place

Greensboro, NC 27401

Or e-mail to:

lwvpt@earthlink.net