

Public Hearing  
Zoning Commission  
September 10, 2007

SCOD-2

RS-12

CD-RM-8

#1892

RS-12

CD-RM-8

#3003

CD-RM-8

#2351

CD-RM-8

CD-RM-18

#1806

REQUESTED FROM RS-12 TO  
CD-PDI 2.63 ACRES  
(OLD BUSINESS B)

FORSYTHIA

RS-12

CD-GB

#1968-21

SCOD-2

CD-RM-18

#1806

SCOD-2

LI

STAGECOACH TRAIL

FORSYTHIA DR

GREEN TREE DR

PI

Guilford  
Primary  
School

RM-12

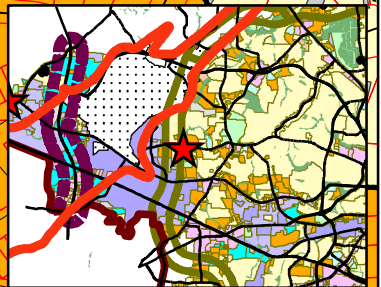
RS-12

CD-RM-18

#3470

RM-12

CD-RM-8



1" = 400'  
Sheet  
220

Feet

0 400 800 1,600