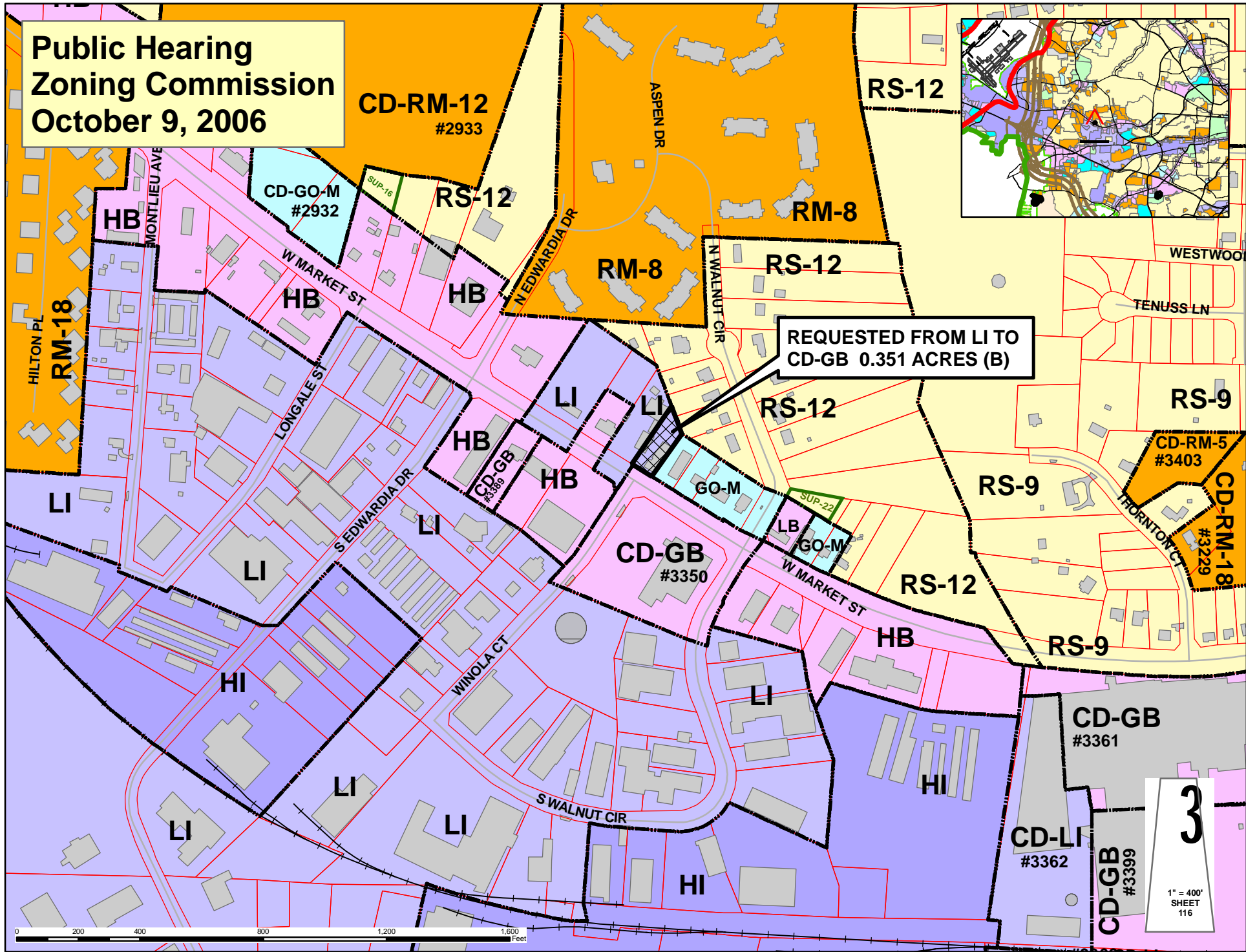
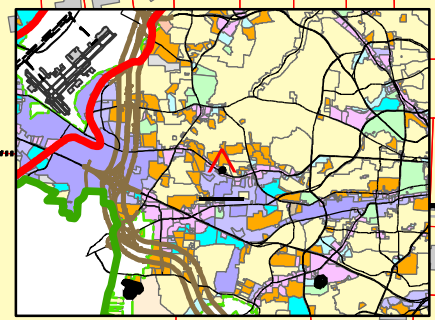


**Public Hearing  
Zoning Commission  
October 9, 2006**



**CD-RM-12**  
#2933

**CD-GO-M**  
#2932

**RS-12**

**RS-12**

**RM-8**

**RM-8**

**RS-12**

**REQUESTED FROM LI TO  
CD-GB 0.351 ACRES (B)**

**RS-12**

**RS-9**

**CD-RM-5**  
#3403

**CD-RM-18**  
#3229

**RS-9**

**RS-12**

**RS-9**

**CD-GB**  
#3350

**CD-GB**  
#3361

**CD-LI**  
#3362

**CD-GB**  
#3399

**3**  
1" = 400'  
SHEET  
116

