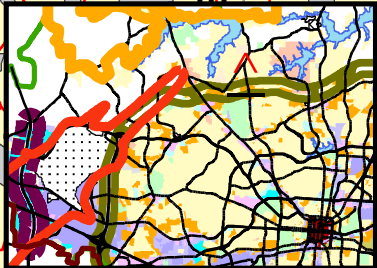


Public Hearing  
Zoning Commission  
August 11, 2008



REQUESTED FROM RS-12  
to CD-LO (0.20 ACRES)

RS-12



TURNMIL

LTSPUR CT

Z-08-08-001

DENSMORE

LAWNDALE DR

BAYBERRY LN

CRANWOOD

KATHERINE'S CIR

KIN

BAYBERRY CT

RM-8

3  
1" = 600'  
Sheet  
22

