

## Greensboro's Recycling Program



It's easy to recycle in Greensboro! You can recycle different materials just by placing them in your brown recycling container. No sorting is required. Recyclables should be dry and free of food particles and liquids. It is not necessary to remove labels, but caps and lids should be placed in the trash. If you are not sure if something can be recycled, call us at 373-CITY (2489).

**1. Plastic bottles and jugs** like soda bottles and milk jugs are accepted. We do not accept round plastic containers like yogurt or margarine tubs or plastic bags.



**2. Aluminum cans** are the only form of aluminum accepted in the Greensboro recycling program. Aluminum foil and pie pans are not accepted.

**3. Steel cans** that usually contain vegetables, fruit, fruit juices, and pet foods are accepted. Remove the lid and throw it away. Because recyclables are sorted by hand at the recycling center, sharp lids are a safety hazard to the employees and should be thrown away.

**4. Aerosol cans**, like those that hairspray, deodorant and household cleaning solutions come in, are recyclable if they **are completely empty**. Remove the spray nozzle before placing in the recycling container.

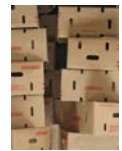
**5. Newspaper** that is dry and free from food, paint, or dirt residue may be recycled. If you have a large stack of papers, it is best to bundle them.



**6. Magazines and catalogs** that are dry are accepted. If you have a large amount of magazines, it is best to bundle them.

**7. Paper** that is dry and free from food, paint, or dirt residue may be recycled. Shredded paper should be placed in a paper bag before being placed into your recycling can. This helps prevent litter on the streets when the can is emptied.

**8. Cardboard** that is unwaxed and uncoated may be recycled. Examples are laundry detergent boxes, furniture and appliance boxes, and shipping boxes. **Do not recycle your pizza boxes** or any cardboard which may have food particles and/or grease on them.



**9. Chipboard** or paperboard with a grayish or brownish color on the inside may be recycled. Cake mix, cereal and cracker boxes, as well as the brownish/gray egg cartons are examples of chipboard. The bag liner often found inside these boxes should be placed in the trash.

**10. Glass food and beverage containers** are accepted from residential customers but not from commercial customers. Vases, bowls, mirrors, and other types of glass are not acceptable.

**11. Rigid plastics** include hard plastic items such as buckets, milk crates, laundry baskets, lawn furniture, plastic toys, pet carriers, litter boxes, and plastic pallets, nursery trays, and flower pots.



---

### Prohibited Items

**No hazardous materials or electronic waste** may be placed in your recycling container. It may be taken to the Household Hazardous Waste Collection Center at 2750 Patterson Street in Greensboro. Call **373-CITY (2489)** if you have questions.

**Tires are not recyclable** in Greensboro's program. The County does operate a tire disposal program. Call 641-3792 for details.

State law requires **yard waste** to be disposed of separately from recyclables and household trash.

**Styrofoam and packing peanuts** may not be placed in the recycling container. Most mail packaging stores will gladly accept Styrofoam peanuts. To locate a store that accepts peanuts, call the national *Peanut Hotline* at 800-828-2214, sponsored by the Plastic Loose Fill Council.