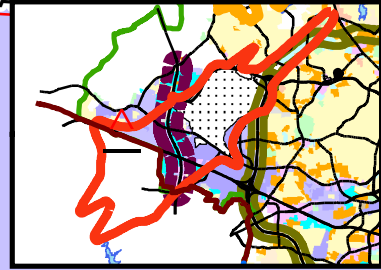


**Public Hearing
Zoning Commission
January 12, 2009**



County

**REQUESTED FROM LI TO
CD-HI (3.85 Acres)**

Z-09-01-004

County

LI
ON/OFF RAMP I-40 W

OFF RAMP I-40 E

NORCROSS RD

SANDY RIDGE RD

TEAMSTERS PL

LITTLE SANTEE RD

CAPITAL RD

HB

OFF RAMP I-40 W
I-40 E

I-40 W

3

1" = 600'
Sheets
615, 616

