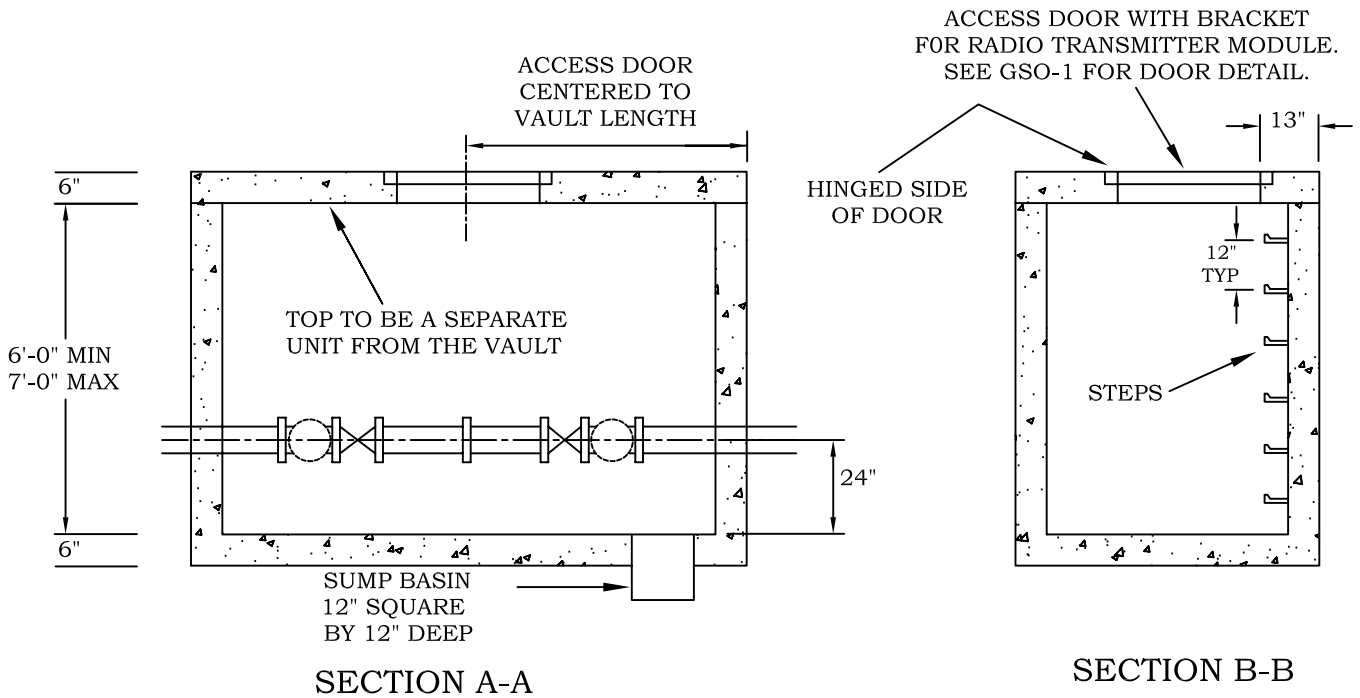


ACCESS DOORS TO BE 36" x 36" ALUMINUM WITH LIFT SPRINGS AND SLAM LOCK MECHANISM. ALL HARDWARE MANUFACTURED OF STAINLESS STEEL. USE U.S. FOUNDRY APS 300, OR APPROVED EQUAL.

TEST CONNECTION - IPT SADDLE, 6" NIPPLE AND WHEEL VALVE.
 3" MVR - 1 1/2" CONNECTION
 4" MVR - 2" CONNECTION
 USE 6"x4" TAPPING SLEEVE W/BLIND FLANGE ON 6" MVR INSTALLATION.



SECTION A-A

SECTION B-B

DIMENSIONS			
LETTER	3" MVR	4" MVR	6" MVR
A	18.5"	14.5"	7"
B	11"	13"	16"
C	8"	9"	10.5"
D	12"	14"	17"
E	15"	15"	18"
F	35"	38"	45.5"
G	65"	73"	88"

- DO NOT CONSTRUCT VAULTS IN LOAD BEARING AREAS.
- VAULT WALLS, TOPS AND FLOORS SHALL BE MANUFACTURED OF REINFORCED CONCRETE PANELS, OR POURED CONCRETE FLOOR, BLOCK WALLS AND REINFORCED PRECAST CONCRETE TOP.
- IF BLOCK WALLS ARE USED, OUTSIDE OF WALLS SHALL BE COATED WITH THORO-SEAL, OR APPROVED EQUAL.
- INSTALL A 2" ELECTRIC SUMP PUMP AND PIPE TO OUTSIDE OF VAULT. A 4" GRAVITY DRAIN CAN BE USED IF THERE IS SUFFICIENT RELIEF FOR DRAINAGE.
- BY-PASS LINE IS THE SAME SIZE AS THE METER AND MUST BE FURNISHED BY THE CITY OF GREENSBORO.

CITY OF GREENSBORO
 WATER RESOURCES DEPT.

3" 4" & 6" MVR METERS
 W/ BUILT-IN STRAINER
 AND BY-PASS

GSO-7

REVISED
 10-25-06