

Public Hearing  
City Council  
October 16, 2007

Major Parks/  
Open Space

Requested from Low Residential to  
High Residential 2.279 Acres

Low  
Residential

Major Parks/  
Open Space

Major Parks/  
Open Space

Major Parks/  
Open Space

Mixed Use  
Commercial

Low  
Residential

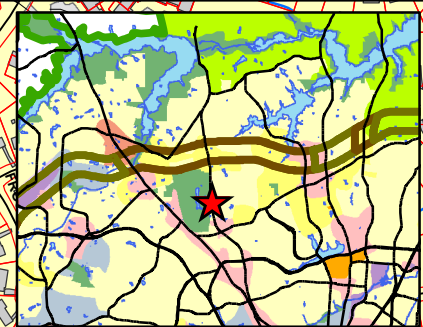
Low  
Residential

Low  
Residential

Low  
Residential

Moderate  
Residential

Mixed Use  
Commercial



CP-07-23

