

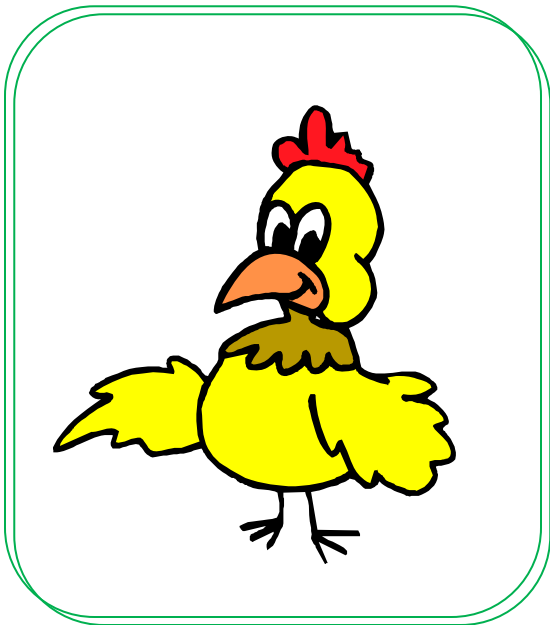
Poultry

The City of Greensboro allows residents to keep chickens and other poultry on residential property.

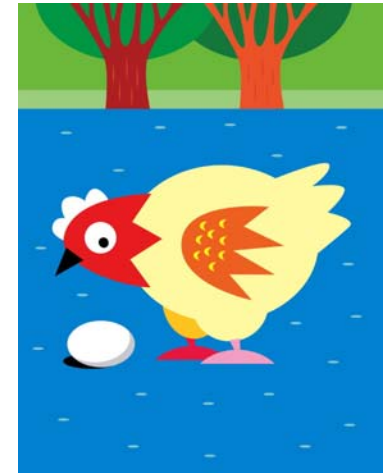
There are limits on the number of animals and placement of your coop.

This brochure is intended to be a quick reference guide. You may find the development standards in full on the City's website www.greensboro-nc.gov/lido. Article 30-8-11.3B

No special permit, approval or registration is required. However, if you are found to be in violation you will receive a Notice of Violation and subject to civil penalty. A quick check with city staff may save you a headache later.



Chickens & Poultry



Planning Department

*"Promoting Quality Growth
throughout Greensboro"*

Phone: 336-373-2144
www.greensboro-nc.gov

City of Greensboro
Planning Department
PO Box 3136
Greensboro NC 27402-3136
Address Correction Required



Poultry Standards

The most important thing to find out is if you are in a zoning district that permits poultry. You can call the City at 336-373-2144 to find out how your property is zoned. They are allowed in single family (R-3, R-5 and R-7) and most multifamily (RM-5, RM-8, RM-12 and RM-18) zoning districts.

- Minimum 7,000 square feet.
- Fenced yard
- Can't be heard off-site

The location of your coop and shelter must be in the accordance to the standards based on your lot size. See next page

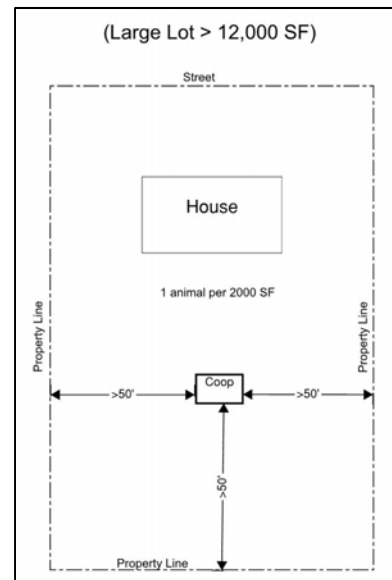


There are two different types of lots: Large Ones and Small Ones. The location of coops and the number of chickens are determined by your lot size.

Large Lots:

lots *greater than 12,000* square feet (SF) in area.*

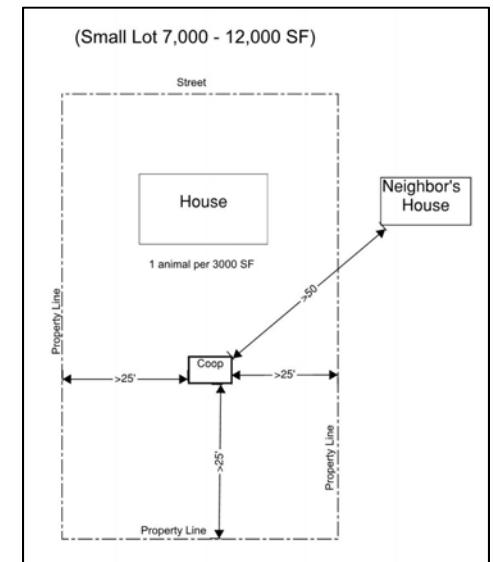
- Coops and shelters 50 feet from all property lines
- One chicken per 2,000 SF
- Maximum 20 chickens



Small Lots:

lots between 7,000 SF and less than 12,000 SF in area

- Coops and shelters 25 feet from all property lines
- 50 feet from principal building on an abutting lot
- One chicken per 3,000 SF
- Maximum 4 chickens



*There is a provision for unique shaped lots, please call our office for more information.