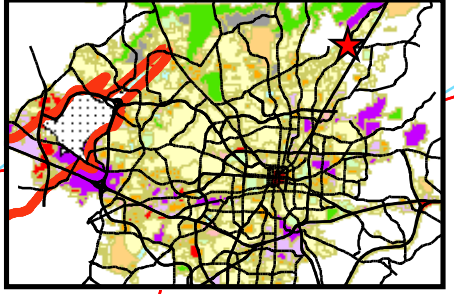


**Public Hearing  
Zoning Commission  
February 13, 2012**



County AG

**CD-RM-12  
CD-RM-12**

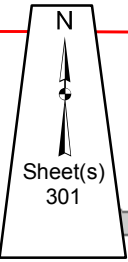
County AG

County RS-30

SUMMIT AVE

**REQUESTED FROM COUNTY AG AND  
COUNTY RS-30 TO CITY R-3 (0.45 ACRES)**

**Z-12-02-004**



County AG