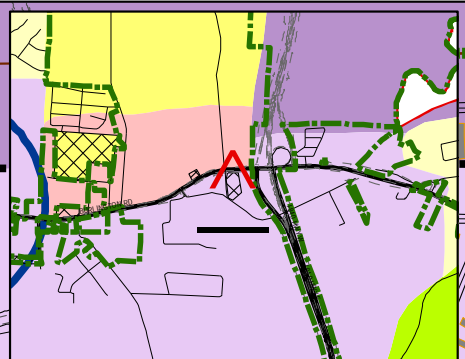


**CITY COUNCIL**  
**November 2, 2010**  
**Tentative**

Mixed Use Commercial

Industrial/  
Corporate Park



Mixed Use Cor

WILLOWLAKE RD

BURLINGTON RD

**Requested from  
Mixed Use Corporate Park  
to Commercial  
3.86 Acres**

**CP-10-06**

Mixed Use Corporate Park

OLD BURLINGTON RD

OLD BURLINGTON RD

WAGONER BEND RD

1840 E  
1840 W

**3**

1" = 400'