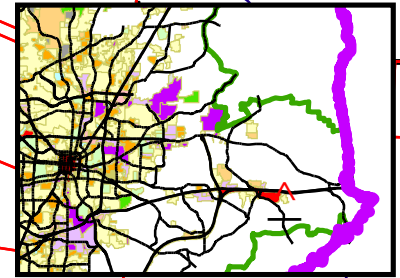


**Public Hearing
Zoning Commission
October 11, 2010**



County CU-PD-M

County CU-LI

County RS-40

MILLSTREAM RD I-85N\40E I-85S\40W

**REQUESTED FROM CD-R-5
TO CD-PI (44.60 ACRES)**

BP

County CU-LI

CD-R5

County CU-RS-9

MT HOPE CHURCH RD
AT&T DR

County CP

County AG

Z-10-09-005

3

Sheet(s)
318

