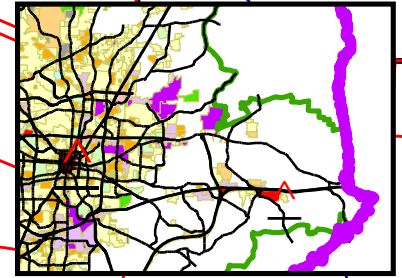


Public Hearing
Zoning Commission
September 13, 2010



County CU-PD-M

County CU-LI

County RS-40

MILLSTREAM RD

I-85N\40E

I-85S\40W

REQUESTED FROM CD-R-5
TO CD-PI (44.60 ACRES)

BP

County CU-LI

CD-R5

County CU-RS-9

MT HOPE CHURCH RD

AT&T DR

County CP

County AG

Z-10-09-005

3

Sheet(s)
318

