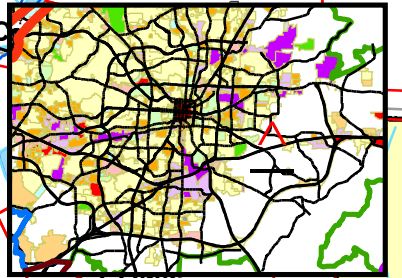


Public Hearing
Zoning Commission
February 14, 2011

County RS-30-MH
County GO-M



County AG

County RS-30

R-5

REQUESTED FROM COUNTY LI
TO CITY LI (20.17 ACRES)

County LI

County HI

County HB

CM

CEDAR PARK RD

BUS 85N40E

BUS 85S40W

Z-11-01-006

County AG

EXIT 128

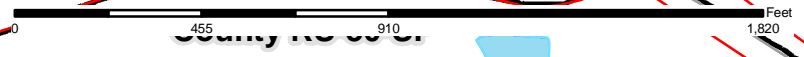
E LEE ST

EXIT 128-A

County RS-30

County RS-30

County RS-30



3
Sheet(s)
63