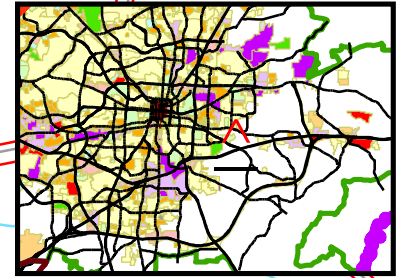


**Public Hearing
Zoning Commission
February 14, 2011**

County RS-7



AGGIE CT
ASTER DR
E. Lee St. Visual Corridor Overlay Zone

County GO-M

PI

County AG

County RS-30-MH
County GO-M

E LEE ST
E LEE ST

County LI

Z-11-01-004

PNR

County LI

County HB

CEDAR PARK RD

**REQUESTED FROM COUNTY AG
AND COUNTY HB TO CITY PI (72.43 ACRES)**

EXIT 128 BUS 85N40E

County PI

County AG

County LI

EXIT 128-A E LEE ST

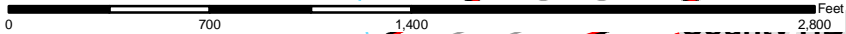
County RS-30

3

County RS-30-SP

Sheet(s)
63

BUS 85S140W



County AG