

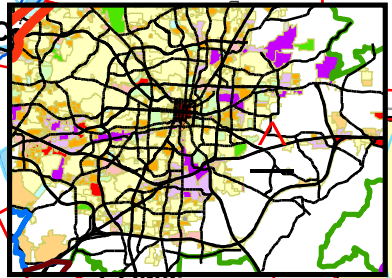
**Public Hearing
Zoning Commission
January 10, 2011**

County RS-30-MH

County GO-M

County AG

MCCO



**REQUESTED FROM COUNTY LI
TO CITY LI (20.17 ACRES)**

County RS-30

R-5

JANET LN

BRIDGEPOINT RD

Z-11-01-006

County LI

County HI

BUS 85S140W

County HB

CEDAR PARK RD

BUS 85N140E

County AG

CEM

EXIT 128

E LEE ST

County RS-30

EXIT 128-A

FRIENDLY CHAPEL RD

County

3

Sheet(s)
63

Feet

0 455 910 1,820

