

# School Zone and Bus Safety



When it's time to head back to school, take heed of the safety precautions regarding school zone and bus safety.

This presentation will cover:

- Tips for Students
- Tips for Parents
- Tips for Motorists
- North Carolina Law



# TIPS FOR STUDENTS

- Always walk – don't run – to the bus stop.
- While waiting at a bus stop, stay in a safe place away from the road.
- Do not engage in horseplay or dart out into the street.
- Stay at least 3-5 giant steps away from the street as the bus approaches. Wait until the bus comes to a complete stop and the doors are open before boarding.
- Hold the handrail when going up and down the stairs.
- After boarding the bus, go directly to a seat and sit down during the entire ride.



- Do not distract the driver with loud talking or music. The driver also has to be alert to sirens or oncoming trains.

- Never play with or block the emergency exits with large instruments or sports equipment.



- Keep your hands to yourself. Don't fight or pick on others.

- Never walk behind a bus because the driver cannot see you. Always cross in front of the bus.

- Do not throw things on the bus or out of the bus windows.

- If you or someone you know is being bullied on the bus or at the bus stop, tell a trusted adult or your SRO.



# TIPS FOR PARENTS

- Make sure all items are inside your child's backpack to prevent dropping items along the way.
- Walk with your child to the bus stop. If they are older, have them walk in groups.
- Review safety tips with your child regularly.
- If you have a concern with safety on your child's bus, don't take matters into your own hands. You're trespassing if you board a school bus without the driver's permission.
- If your child has an issue with bullying, you can report it anonymously at [www.gcsnc.com/bullying](http://www.gcsnc.com/bullying).





- Caution your children to be careful in and around buses. Drivers may be in a hurry and not stop when they are getting on or off the bus.
- It's a good idea to get to know your child's bus driver.
- Teach your children to gather all items and secure loose drawstrings that may get caught in the door or handrail of the bus.
- If your child has to get off at a different bus stop, they need written permission. Follow school procedures for notifying school administration and the bus driver.
- Exercise precaution when meeting your child after school. Wait at the bus stop and not across the street. Kids can get excited to see you and forget the safety rules.



# TIPS FOR MOTORISTS

- Be patient! School buses make frequent stops. Come to a complete stop when a bus is loading or unloading students.
- NEVER pass a stopped school bus while its lights are flashing and its mechanical stop arm is extended. You risk causing serious injury to a child.
- Watch for children who are playing and gathering near bus stops. Kids can dart out into the roadway without warning.
- Take heed of weather conditions. School buses take longer to stop than motor vehicles – especially in poor weather. Increase your travel distance behind buses, and don't cut in front of a bus leaving it little room to stop.



- Obey the signals from school crossing guards or police in school zones.

- Slow down around bus stops.

- Reduce speed to 25 MPH and stay alert in school zones.

- Do you see a stopped school bus and don't know what to do? The next slides will show you rules of the road.

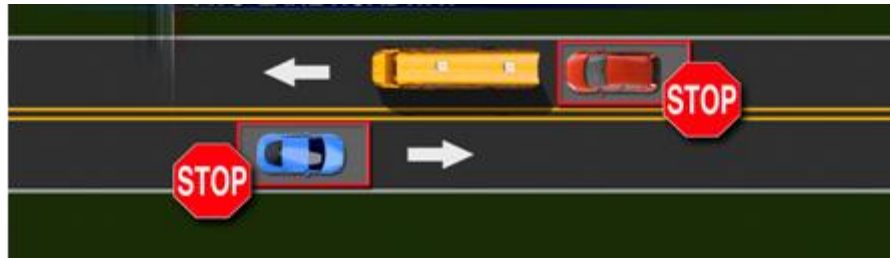




# NC SCHOOL BUS STOP LAWS

Two-lane roadway:

When a school bus stops for passengers, all traffic from both directions must stop.



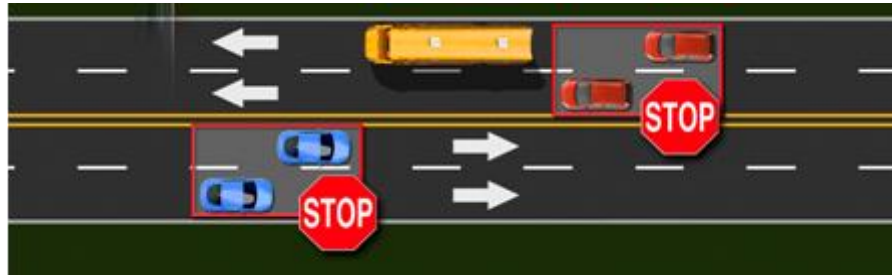
Two-lane roadway with a center turning lane:

When a school bus stops for passengers, all traffic from both directions must stop.

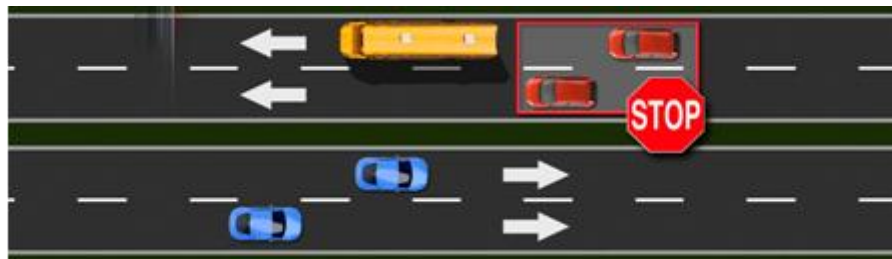


# NC SCHOOL BUS STOP LAWS

Four-lane roadway without a median separation:  
When a school bus stops for passengers, all traffic from both directions must stop.

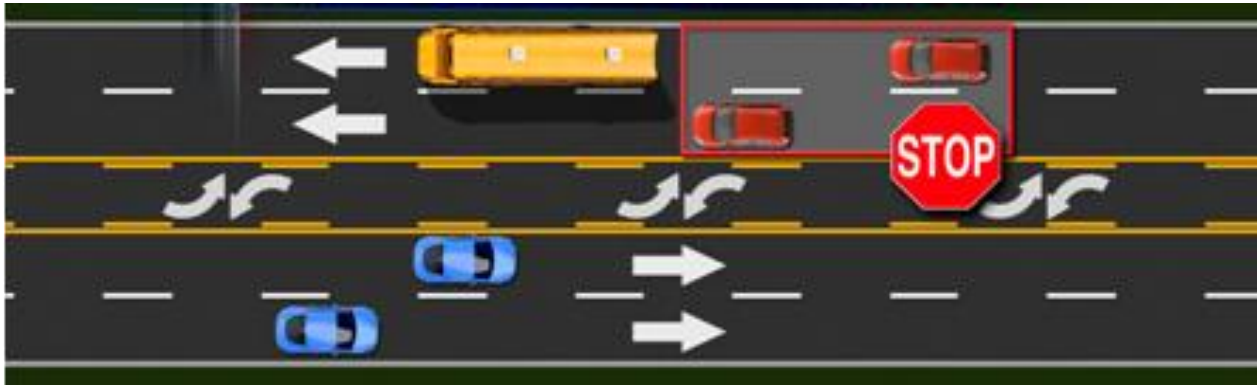


Divided highway of four lanes or more with a median separation:  
When a school bus stops for passengers, only traffic following the bus must stop.



# NC SCHOOL BUS STOP LAWS

Roadway of four lanes or more with a center turning lane:  
When school bus stops for passengers, only traffic following the bus must stop.



# DANGER ZONE

The “Danger Zone” is the 10-foot area around the bus. The bus driver can’t see you when you are in the danger zone. If the bus starts moving while you are in the danger zone, you could get dragged under the bus.



# Additional Resources

These resources provide information on school zone and bus safety:

North Carolina School Bus Safety

<http://ncbussafety.org>

American School Bus Council

<http://www.americanschoolbuscouncil.org>





# School Zone and Bus Safety

