

How to Use CrimeMapping.com

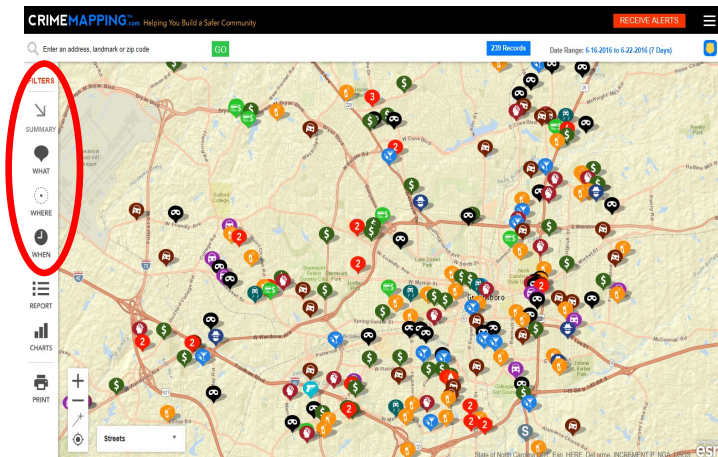


CrimeMapping.com is a web-based program that allows you to search for crimes reported to Greensboro Police Department. You may search for incidents near an address or you may look at events citywide. Searches can include any single category, or any combination of the 15 categories of crimes.

To access this website you may:

- Click on this link to initially view a citywide map of [Greensboro](#), or
- Go to the homepage at www.CrimeMapping.com
 - Select the state “North Carolina” from the dropdown menu on the right for “Select A State/Province”, next
 - Select the “Greensboro Police Department” from the dropdown that appears for “Select an Agency”

Or, you can “Enter and Address, landmark or zip code” on the left side of CrimeMapping to see crime in the vicinity of a specific address.



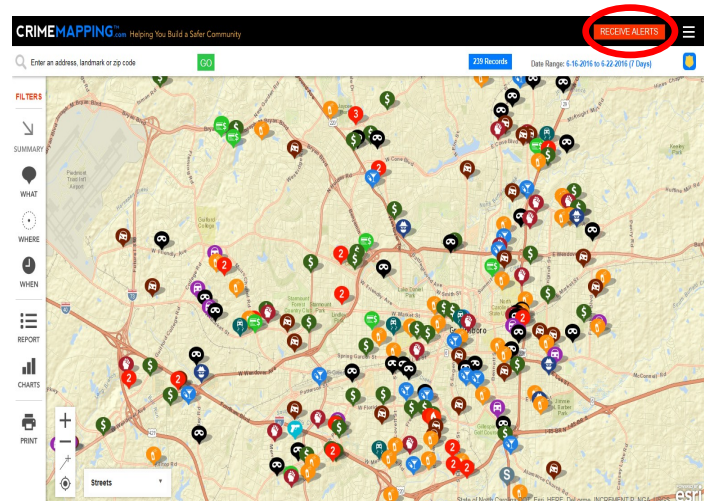
The “What” tab will show you the crime category icons and allow you to choose specific crime types to view on the map. If you click on an icon on the map you will view public information related to that specific incident.

The “When” tab will allow you to change the date range that is being searched. The default is set to one week prior; however, you have the option of searching a period of time up to six months prior to the current date.

The “Where” tab will allow you to set or change your default search radius.

You may also request crime alerts via e-mail from CrimeMapping.com. To get alerts, click on the “Crime Alerts” tab on the top right hand side of the screen. Select the types of crimes you wanted to be notified on, and fill in the boxes with your information.

Once you submit this form, you will receive a confirmation email. You will need to click on “**Confirm My Alert**” near the bottom of the email to confirm your enrollment in receiving crime alerts.



If you have any questions about CrimeMapping.com, contact your Community Resource Officer, or GPD’s Crime Analysis at (336) 373-2534.