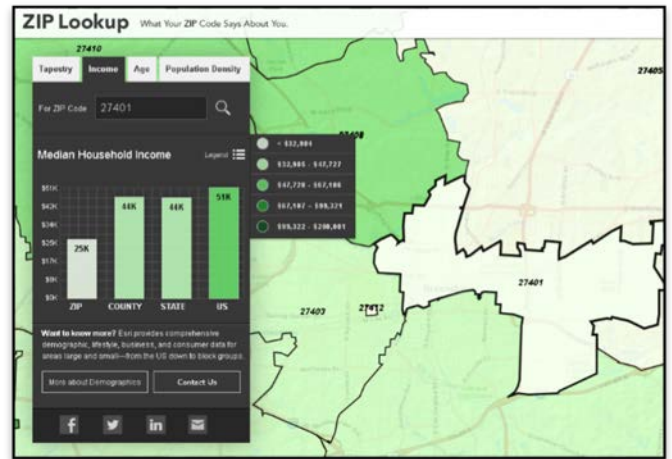


ZIP Lookup

http://www.esri.com/data/esri_data/ziptapestry

- income
- age
- population density

Type in a Greensboro zip code and click through the variables to see comparisons to the county, state & US.

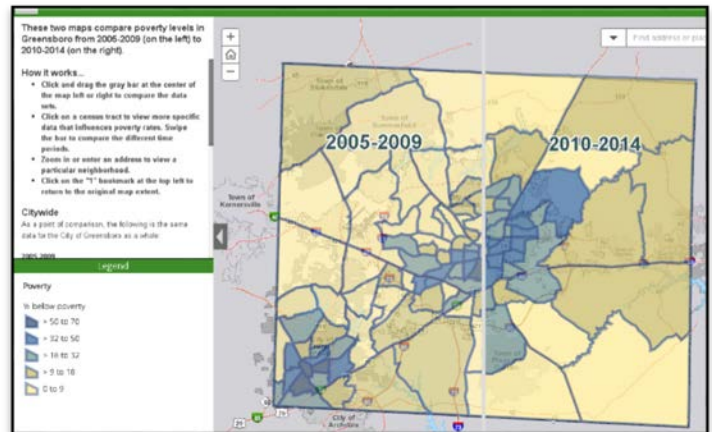


Changing Level of Poverty in Greensboro, NC

<http://greensboro.maps.arcgis.com/apps/StorytellingSwipe/index.html?appid=85f3e96f9ef143439347c553ed63f0d3>

- poverty
- education
- earnings

City staff created this map to compare poverty levels over nearly a decade. Click on the census tracts to see detailed data.

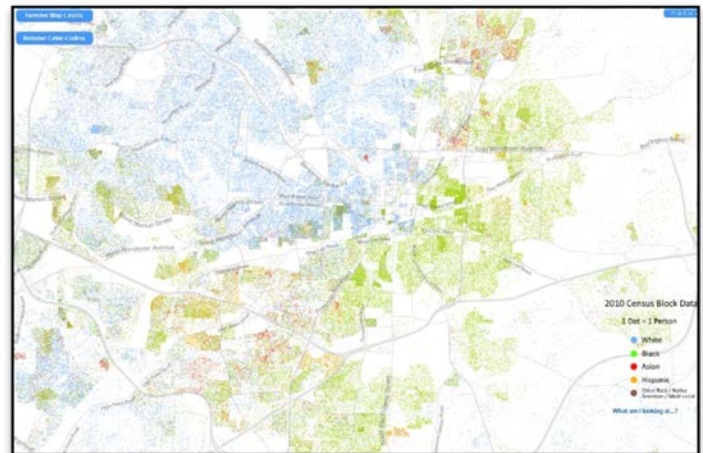


The Racial Dot Map

<http://demographics.virginia.edu/DotMap/>

- race

“Provides an accessible visualization of geographic distribution, population density, and racial diversity of the American people in every neighborhood in the entire country.” Add map labels then zoom in to Greensboro.



Social Explorer

<http://www.socialexplorer.com/>

- population density
- race
- unemployment
- occupied housing units
- vacancy status
- employment

Click through many data categories, available for multiple years and down to the “block group” geography. No need to sign up, just “Start Now” on the main page.

