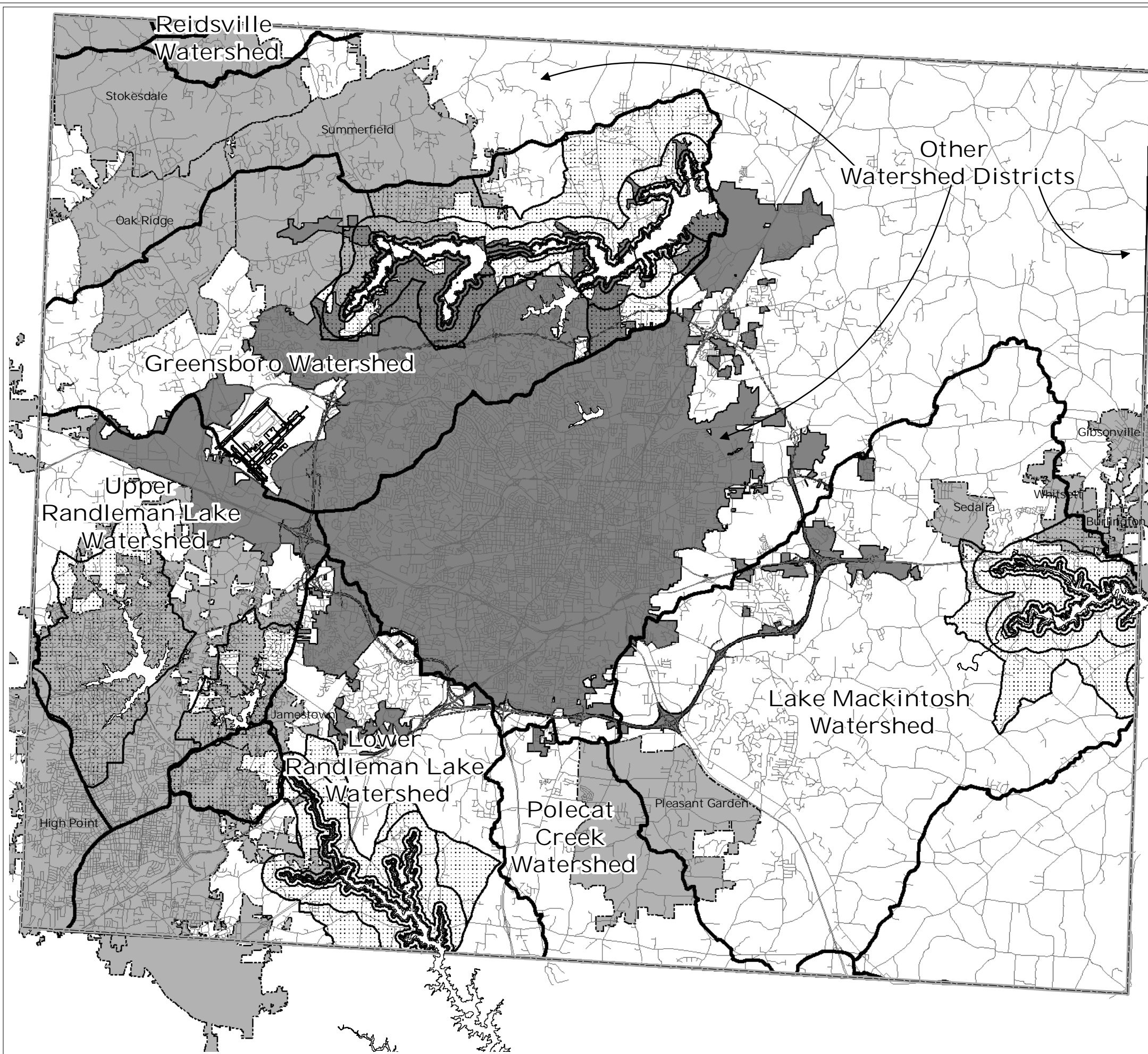





Greensboro Designated Watershed Map



-  Watershed Critical Tiers
-  Watershed Critical Areas
-  Watersheds

No land within the WCA's of Oak Hollow Lake, High Point Lake, and Oakdale-Cotton Mill Lake is annexable by Greensboro. Therefore, tiers therein are not shown. The City of Greensboro is not responsible for the accuracy of the information displayed on this map.

Effective June 1, 2009



Map prepared by
City of Greensboro
Planning Department
January 2009